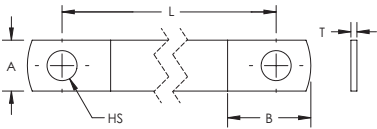


MBJ Grounding and Bonding Braid, Tinned Copper



MBJ Grounding and Bonding Braids are a reliable and convenient grounding solution for applications that require flexibility and durability. The tinned copper ground braids with massivated palms come ready to install without any additional cutting, stripping, crimping or punching and do not require the addition of tin or crimped lugs. The proprietary manufacturing process optimizes the electrical contact between each wire and helps eliminate moisture issues in the palms, preventing corrosion and lengthening the useful life of the braid.

- Complete range of earth/ground flexible connections from 6 - 100 mm² (11.84 - 197.35 kcmil) cross section and from 100 - 500 mm (3.937" - 19.685") length
- Integral palm, without tin or crimped lugs for superior electrical contact and tensile strength resistance
- Resistant to vibration and fatigue, reducing maintenance
- Provides weight savings, material savings and lower impedance when compared to similar lugged cables with insulation
- Ready to use out of the box, eliminates the need for cutting, stripping, crimping and punching
- Quick and easy to install
- Recommended by the EMC/EMI directives and less impedance than cables
- GOST compliant
- RoHS compliant



Material: Copper
 Finish: Tinned
 Working Temperature: 105 °C Max
 Complies With: IEC® 60439.1, IEC® 61439.1



Part Number	Article Number	Intensity	Thickness T	Cross Section	Length L	Hole Size HS	A	B	Unit Weight
MBJ6-150-6	556600	40 A	1.1 mm	6 mm ²	150 mm	6.5 mm	11 mm	18 mm	0.010 kg
MBJ6-200-6	563410	40 A	1.1 mm	6 mm ²	200 mm	6.5 mm	11 mm	18 mm	0.017 kg
MBJ10-200-6	556930	75 A	1.1 mm	10 mm ²	200 mm	6.5 mm	11 mm	18 mm	0.022 kg
MBJ10-300-6	556610	75 A	1.1 mm	10 mm ²	300 mm	6.5 mm	11 mm	18 mm	0.033 kg
MBJ16-100-6	563540	120 A	1.5 mm	16 mm ²	100 mm	6.5 mm	15 mm	20 mm	0.018 kg
MBJ16-100-8	556620	120 A	1.5 mm	16 mm ²	100 mm	8.5 mm	15 mm	20 mm	0.018 kg
MBJ16-150-6	563550	120 A	1.5 mm	16 mm ²	150 mm	6.5 mm	15 mm	20 mm	0.035 kg
MBJ16-150-8	556630	120 A	1.5 mm	16 mm ²	150 mm	8.5 mm	15 mm	20 mm	0.035 kg
MBJ16-200-6	563300	120 A	1.5 mm	16 mm ²	200 mm	6.5 mm	15 mm	20 mm	0.033 kg
MBJ16-200-8	556640	120 A	1.5 mm	16 mm ²	200 mm	8.5 mm	15 mm	20 mm	0.033 kg
MBJ16-250-8	556650	120 A	1.5 mm	16 mm ²	250 mm	8.5 mm	15 mm	20 mm	0.040 kg
MBJ16-300-6	563320	120 A	1.5 mm	16 mm ²	300 mm	6.5 mm	15 mm	20 mm	0.050 kg
MBJ16-300-8	556660	120 A	1.5 mm	16 mm ²	300 mm	8.5 mm	15 mm	20 mm	0.050 kg



Part Number	Article Number	Intensity	Thickness T	Cross Section	Length L	Hole Size HS	A	B	Unit Weight
MBJ16-500-8	556940	120 A	1.5 mm	16 mm ²	500 mm	8.5 mm	15 mm	20 mm	0.082 kg
MBJ25-100-10	556670	150 A	1.5 mm	25 mm ²	100 mm	10.5 mm	22 mm	28 mm	0.027 kg
MBJ25-150-10	556680	150 A	1.5 mm	25 mm ²	150 mm	10.5 mm	22 mm	28 mm	0.039 kg
MBJ25-200-6	563340	150 A	1.5 mm	25 mm ²	200 mm	6.5 mm	22 mm	28 mm	0.052 kg
MBJ25-200-10	556690	150 A	1.5 mm	25 mm ²	200 mm	10.5 mm	22 mm	28 mm	0.052 kg
MBJ25-200-12	563430	150 A	1.5 mm	25 mm ²	200 mm	12.5 mm	22 mm	28 mm	0.052 kg
MBJ25-250-10	556700	150 A	1.5 mm	25 mm ²	250 mm	10.5 mm	22 mm	28 mm	0.064 kg
MBJ25-300-10	556710	150 A	1.5 mm	25 mm ²	300 mm	10.5 mm	22 mm	28 mm	0.077 kg
MBJ25-500-10	556950	150 A	1.5 mm	25 mm ²	500 mm	10.5 mm	22 mm	28 mm	0.130 kg
MBJ30-100-10	556720	180 A	2.0 mm	30 mm ²	100 mm	10.5 mm	22 mm	28 mm	0.032 kg
MBJ30-150-10	556730	180 A	2.0 mm	30 mm ²	150 mm	10.5 mm	22 mm	28 mm	0.047 kg
MBJ30-200-10	556740	180 A	2.0 mm	30 mm ²	200 mm	10.5 mm	22 mm	28 mm	0.062 kg
MBJ30-250-10	556750	180 A	2.0 mm	30 mm ²	250 mm	10.5 mm	22 mm	28 mm	0.075 kg
MBJ30-300-10	556760	180 A	2.0 mm	30 mm ²	300 mm	10.5 mm	22 mm	28 mm	0.092 kg
MBJ30-500-10	556960	180 A	2.0 mm	30 mm ²	500 mm	10.5 mm	22 mm	28 mm	0.155 kg
MBJ35-250-25	565000	197 A	1.5 mm	35 mm ²	250 mm	25.5 mm	40 mm	45 mm	0.089 kg
MBJ35-100-10	556770	197 A	2.1 mm	35 mm ²	100 mm	10.5 mm	22 mm	28 mm	0.037 kg
MBJ35-150-10	556780	197 A	2.1 mm	35 mm ²	150 mm	10.5 mm	22 mm	28 mm	0.054 kg
MBJ35-200-10	556790	197 A	2.1 mm	35 mm ²	200 mm	10.5 mm	22 mm	28 mm	0.072 kg
MBJ35-250-10	556800	197 A	2.1 mm	35 mm ²	250 mm	10.5 mm	22 mm	28 mm	0.089 kg
MBJ35-300-10	556810	197 A	2.1 mm	35 mm ²	300 mm	10.5 mm	22 mm	28 mm	0.110 kg
MBJ35-500-10	556970	197 A	2.1 mm	35 mm ²	500 mm	10.5 mm	22 mm	28 mm	0.180 kg
MBJ50-100-10	556820	250 A	2.5 mm	50 mm ²	100 mm	10.5 mm	28 mm	33 mm	0.052 kg
MBJ50-150-10	556830	250 A	2.5 mm	50 mm ²	150 mm	10.5 mm	28 mm	33 mm	0.077 kg
MBJ50-200-6	563350	250 A	2.5 mm	50 mm ²	200 mm	6.5 mm	28 mm	33 mm	0.120 kg
MBJ50-200-10	556840	250 A	2.5 mm	50 mm ²	200 mm	10.5 mm	28 mm	33 mm	0.120 kg
MBJ50-200-12	563440	250 A	2.5 mm	50 mm ²	200 mm	12.5 mm	28 mm	33 mm	0.120 kg
MBJ50-200-16	563360	250 A	2.5 mm	50 mm ²	200 mm	16.5 mm	28 mm	33 mm	0.110 kg
MBJ50-200-18	563370	250 A	2.5 mm	50 mm ²	200 mm	18.5 mm	28 mm	33 mm	0.110 kg
MBJ50-250-10	556850	250 A	2.5 mm	50 mm ²	250 mm	10.5 mm	28 mm	33 mm	0.127 kg
MBJ50-300-6	563380	250 A	2.5 mm	50 mm ²	300 mm	6.5 mm	28 mm	33 mm	0.150 kg
MBJ50-300-10	556860	250 A	2.5 mm	50 mm ²	300 mm	10.5 mm	28 mm	33 mm	0.153 kg
MBJ50-300-16	563390	250 A	2.5 mm	50 mm ²	300 mm	16.5 mm	28 mm	33 mm	0.150 kg
MBJ50-300-18	563400	250 A	2.5 mm	50 mm ²	300 mm	18.5 mm	28 mm	33 mm	0.140 kg
MBJ50-500-10	556980	250 A	2.5 mm	50 mm ²	500 mm	10.5 mm	28 mm	33 mm	0.255 kg
MBJ50-500-12	563560	250 A	2.5 mm	50 mm ²	500 mm	12.5 mm	28 mm	33 mm	0.255 kg
MBJ70-300-22	563480	290 A	2.8 mm	70 mm ²	300 mm	22.5 mm	40 mm	45 mm	0.200 kg
MBJ70-300-6	563450	290 A	3.4 mm	70 mm ²	300 mm	6.5 mm	28 mm	33 mm	0.210 kg
MBJ70-300-10	563460	290 A	3.4 mm	70 mm ²	300 mm	10.5 mm	28 mm	33 mm	0.210 kg
MBJ70-300-12	563420	290 A	3.4 mm	70 mm ²	300 mm	12.5 mm	28 mm	33 mm	0.210 kg
MBJ70-300-16	563470	290 A	3.4 mm	70 mm ²	300 mm	16.5 mm	28 mm	33 mm	0.200 kg
MBJ70-500-10	563490	290 A	3.4 mm	70 mm ²	500 mm	10.5 mm	28 mm	33 mm	0.340 kg
MBJ100-250-16	563500	349 A	4.0 mm	100 mm ²	250 mm	16.5 mm	50 mm	55 mm	0.254 kg
MBJ100-250-30	563510	349 A	4.0 mm	100 mm ²	250 mm	30.5 mm	50 mm	55 mm	0.254 kg
MBJ100-500-16	563520	349 A	4.0 mm	100 mm ²	500 mm	16.5 mm	50 mm	55 mm	0.508 kg
MBJ100-500-30	563530	349 A	4.0 mm	100 mm ²	500 mm	30.5 mm	50 mm	55 mm	0.508 kg



IEC is a registered trademark of the International Electrotechnical Commission. UL, UR, cUL, cUR, cULus and cURus are registered certification marks of UL LLC.

WARNING

ERICO products shall be installed and used only as indicated in ERICO's product instruction sheets and training materials. Instruction sheets are available at www.erico.com and from your ERICO customer service representative. Improper installation, misuse, misapplication or other failure to completely follow ERICO's instructions and warnings may cause product malfunction, property damage, serious bodily injury and death.

Copyright © 2015 ERICO International Corporation. All rights reserved.

CADDY, CADWELD, CRITEC, ERICO, ERIFLEX, ERITECH, and LENTON are registered trademarks of ERICO International Corporation.



ERICO[®]